

Features:

- * Choice of through-hole and surface mount.
- * Low profile 4.57mm(0.180").
- * Mates with 0.46mm(0.018") square pin.
- * Choice of two different dip length.

Material:

Housing: High temperature housing withstands IR and VPR soldering methods.

Contacts: Phosphor Bronze.

Plating: Gold plated over nickel.

Tin plated over nickel.

Electrical Characteristics:

Current Rating: 1 AMP.

Insulator Resistance: 5000MΩmin. at DC 500V.

Contact Resistance: 20mΩmax. at DC 100mA.

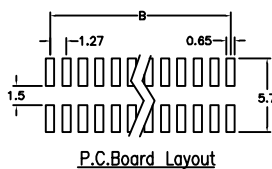
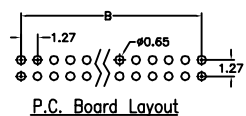
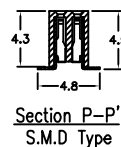
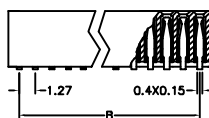
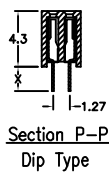
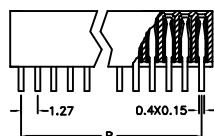
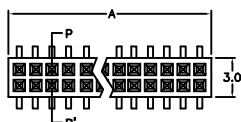
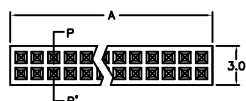
Operating Temperature: -65°C~+125°C.

Max Processing Temperature: 230°C for 30~60 seconds.

Mechanical Characteristics:

Insertion Force: 140g avg.(0.46mm dia. pin)

Withdrawal Force: 114g avg.(0.46mm dia. pin)



X	1	2
Length	3.05	1.91
Position	6 Thru 100	
Dimension		
A	1.27 X No. of Positions /2+0.4	
B	1.27 X No. of Positions /2-1.27	

Ordering information

PS22- 2 50 1 1 1
 Series Double Row No. of 3: Selective Gold Plated 1: Straight *1: 3.05mm
 Pin Per Row 1: Gold Plated 3: Surface Mount *2: 1.91mm